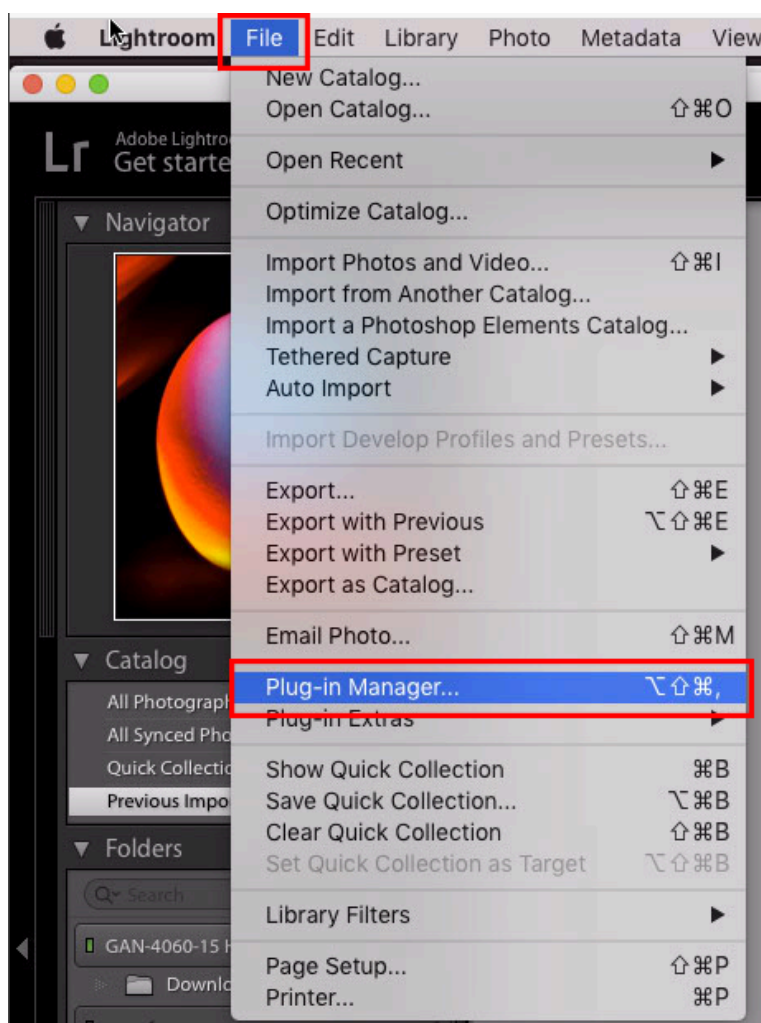


# How to Add Canon Plug-in to Lightroom

CAD Tech Student Managers - 2025-12-22 - [How-to Articles](#)

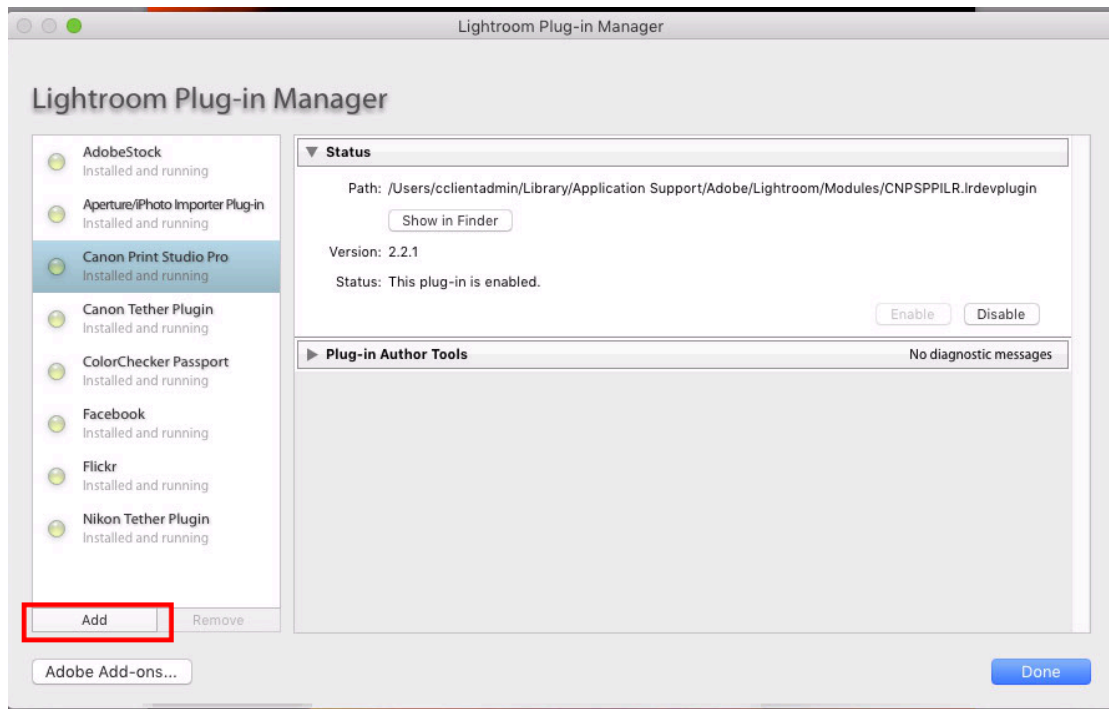
## Step 1

Open Lightroom and select "File" from the menu. If the plug-in doesn't exist under "Plug-in Extras" select the "Plug-in Manager..."



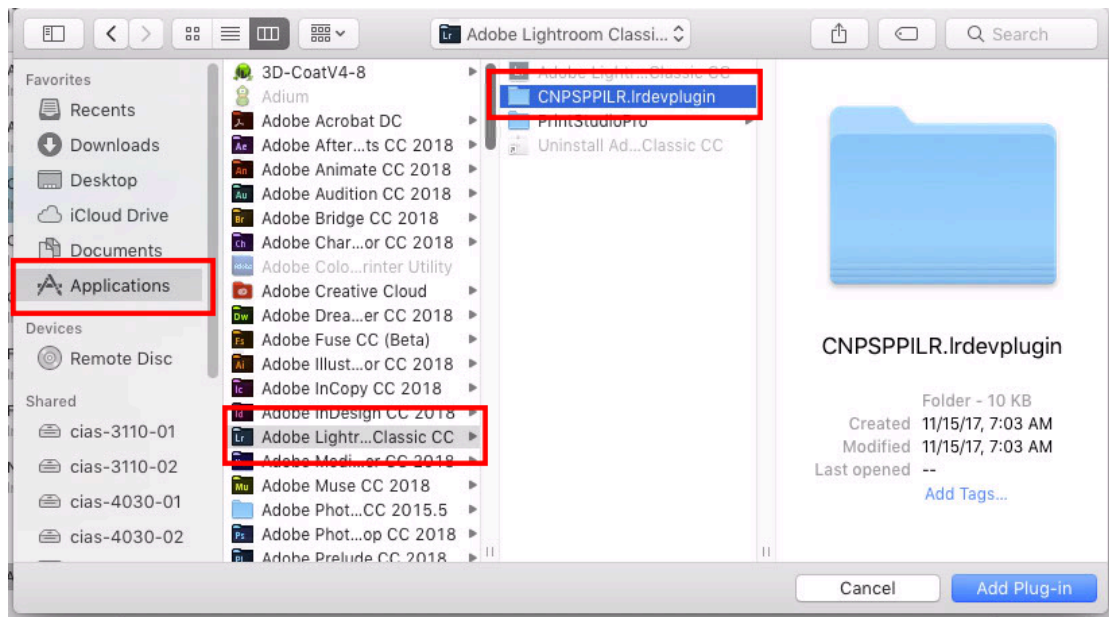
## Step 2

Once the Plug-in Manager loads, select "Add" to find the location of the Canon Print Studio Pro plug-in.



### Step 3

The Canon Print Studio Pro plug-in should exist in the Lightroom folder. To find it go to "Applications→Adobe Lightroom Classic CC→ CNPSPILR.Irdevplugin" once the plug-in has been selected, hit "Add Plug-in" to complete adding it.



You should now be able to locate the plug-in under the "Plug-in Extras" tab in the File menu.